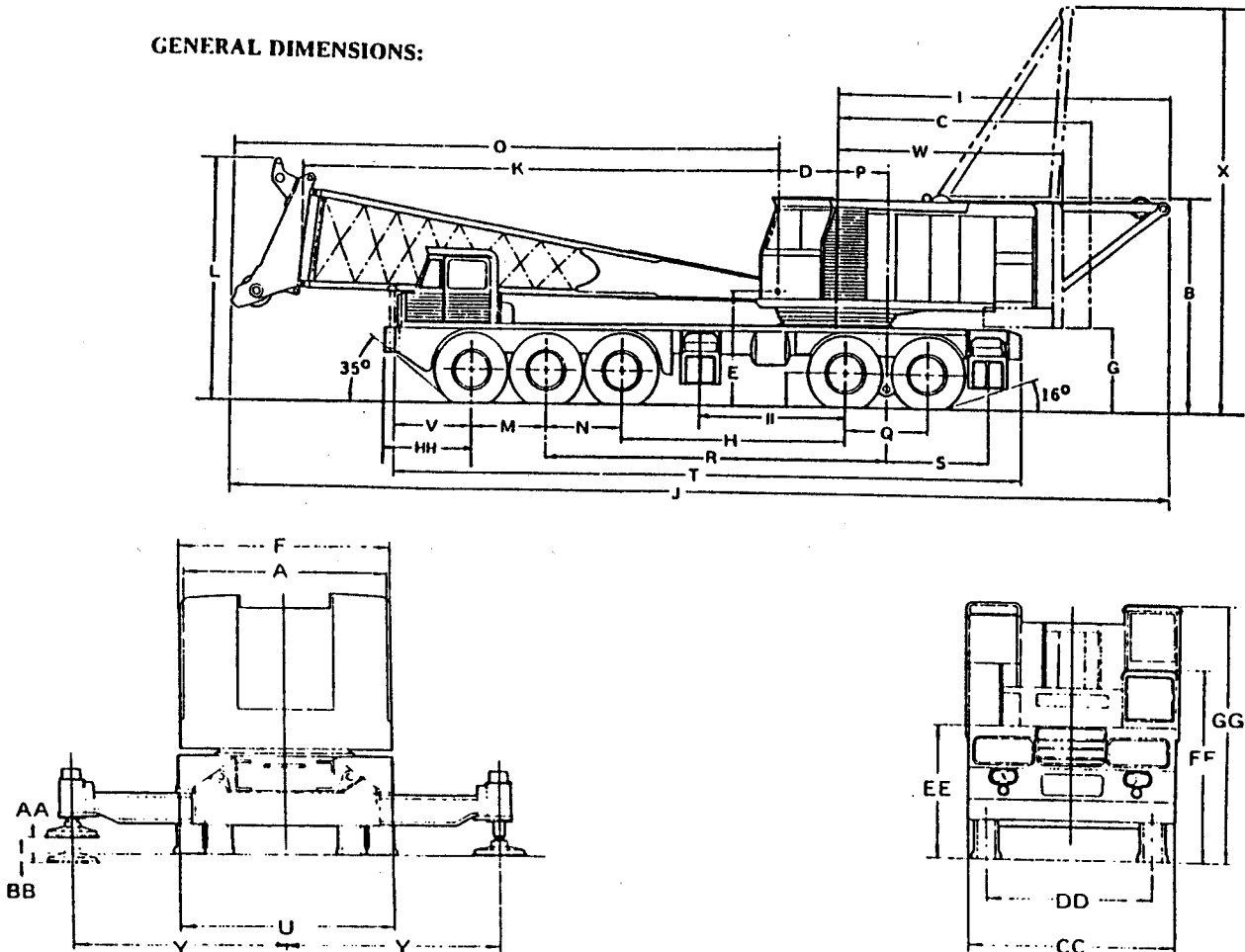


General Specifications

350 FEET BOOM AND JIB

165 TON

GENERAL DIMENSIONS:

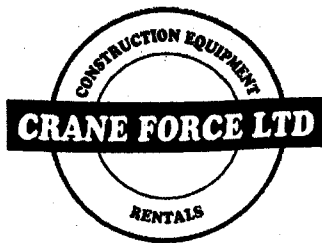


A	B	C	D	E	F	G	H	I	J	K
10'-6" (3.2 m)	13'-4.5" (4 m)	16'-8.75" (5.1 m)	3'-8" (1.1 m)	7'-3" (2.2 m)	10'-10" (3.2 m)	6'-3" (1.8 m)	14'-3" (4.3 m)	21'-6" (6.5 m)	59'-6" (18.1 m)	30'-3" (9.2 m)

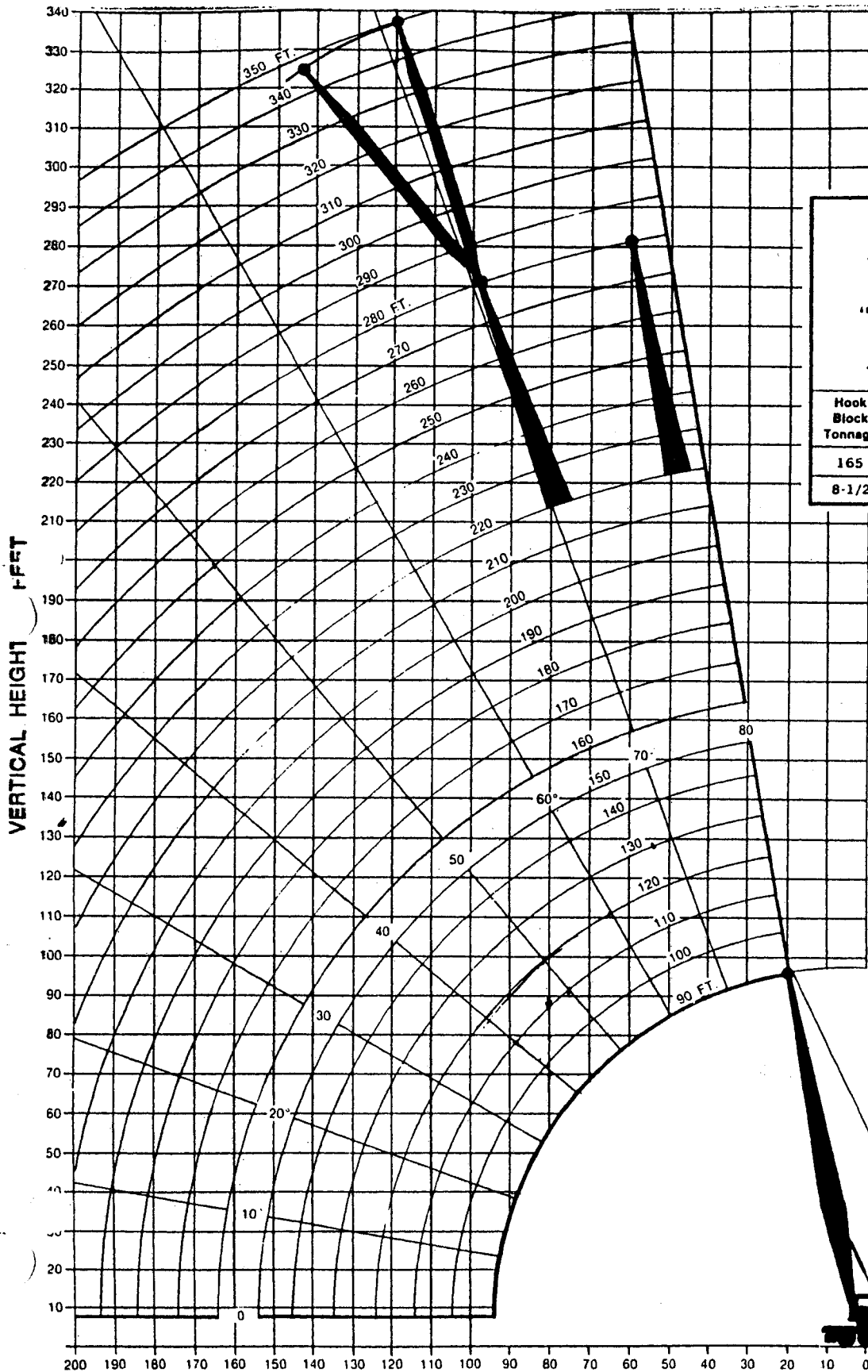
L	M	N	O	P	Q	R	S	T	U	V
15'-3" (4.6 m)	4'-10" (1.4 m)	4'-10" (1.4 m)	34'-4" (10.5 m)	3'-3" (1 m)	6'-2" (1.8 m)	21'-8" (6.6 m)	6'-5" (1.95 m)	39'-9.75" (12.1 m)	10'-11.75" (3.3 m)	4'-10" (1.4 m)

W	X	Y	AA	BB	CC	DD	EE	FF	GG	HH	II
14'-5" (4.4 m)	25'-0" (7.6 m)	11'-0" (3.4 m)	10" (254 mm)	5" (127 mm)	10'-8" (3.2 m)	100" (2.5 m)	8'-9.83" (2.1 m)	9'-9.13" (3 m)	13'-2.12" (4 m)	7'-1" (2.16 m)	11'-10" (3.61 m)

- (1) Basic 33' (10 m) H.H. boom with no mast, 15'-3" (4.6 m)
- (2) Basic 33' (10 m) H.H. boom with mast, 15'-3" (4.6 m)
- (3) Base section only with no mast, 13'-6" (4.1 m)
- (4) Base section only with mast, 14'-3" (4.3 m)
- (5) Dimensions L,E,G,B,X, increase by 4.5" (114 mm)



CRANE FORCE LTD.



HOOK BLOCK CLEARANCES

Hook Block Tonnage	Number of Sheaves	Hook Block Weight	Dimension "A"
165	6	3230 Lbs	20'-4"
8-1/2	None	615 Lbs	6'-0"

**LONG TAPERED
PEAK BOOM**

**MC-8165
10 X 4**

NOTES FOR JIB APPLICATION

1. Jibs may be used straight or offset. 30' jib is of two-piece design and may be extended to 70' with center sections. The following data apply:

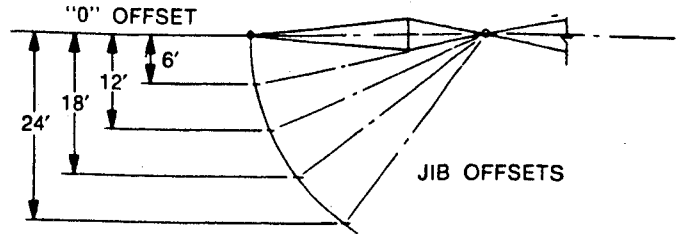
Jib Lgh.	Radius	Max. Lgh. of Boom Incl. Jib		Jib Offset and Max. Load Ratings (Lbs.)					Weight of Jib and Backstays
		Std. Ctr.	Max. Ctr.	0 Ft.	6 Ft.	12 Ft.	18 Ft.	24 Ft.	
30 Ft.	Up thru 70' Over 70'	260 Ft.	310 Ft.	30000	30000	30000			2230 Lbs.
40 Ft.	Up thru 70' Over 70'	260 Ft.	320 Ft.	22000	22000	22000	16000		2600 Lbs.
50 Ft.	Up thru 70' Over 70'	270 Ft.	330 Ft.	15000	15000	15000	14000	12000	2810 Lbs.
60 Ft.	Up thru 70' Over 70'	270 Ft.	340 Ft.	12000	12000	11000	10000	9000	3150 Lbs.
70 Ft.	Up thru 70' Over 70'	280 Ft.	350 Ft.	10000	9000	8000	7000	6000	3400 Lbs.
				7000	6500	6000	5500	4500	

2. Load ratings for jibs are the same as for the boom length which is equal to the length of main boom plus jib but in no case may they exceed the capacities shown above.

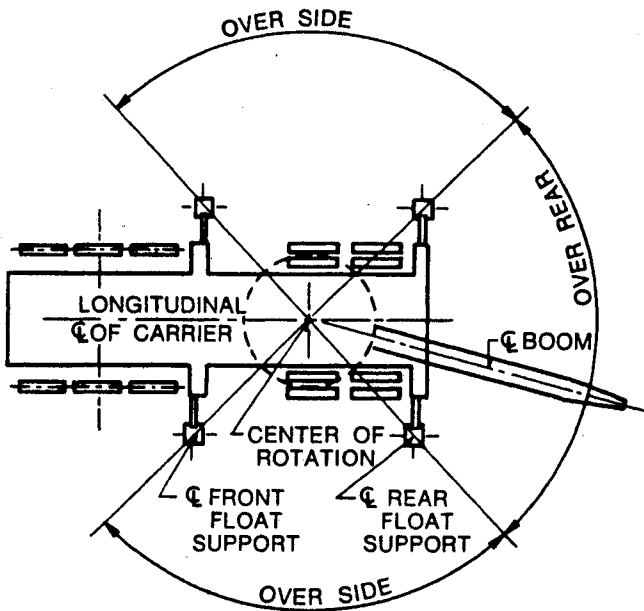
3. With jib installed, load ratings over main boom head must be reduced as follows:

2320 lbs. for 30 ft. jib
2750 lbs. for 40 ft. jib

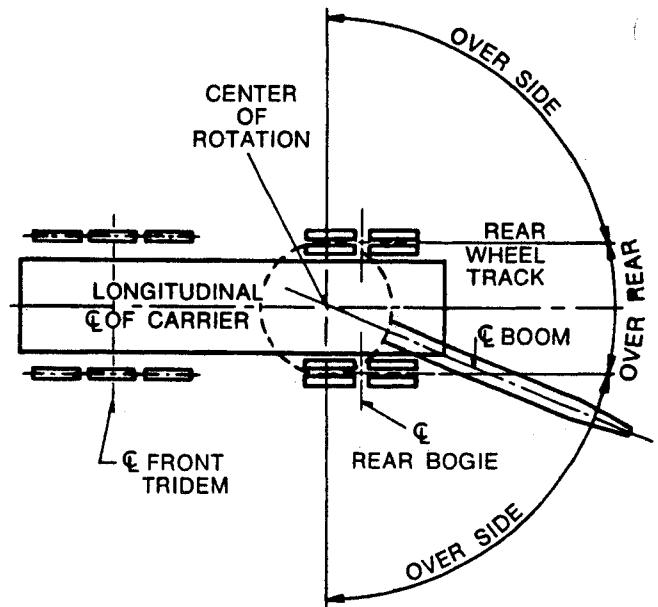
3020 lbs. for 50 ft. jib
3450 lbs. for 60 ft. jib
3750 lbs. for 70 ft. jib



CRANE WORKING AREAS



Carrier With Outriggers



Carrier Without Outriggers